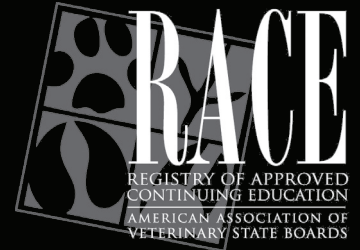
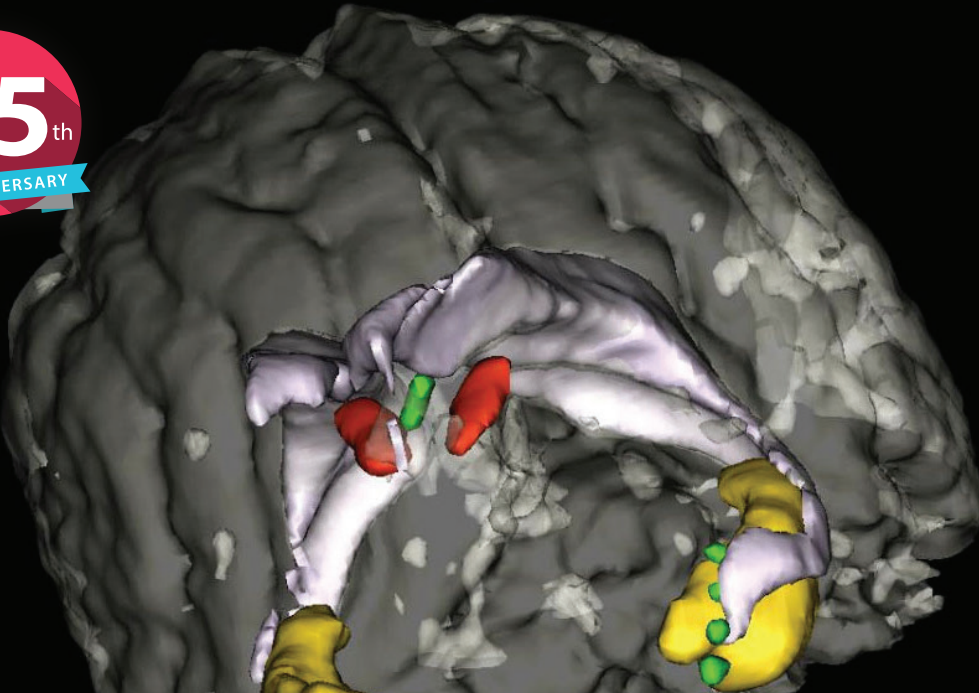




25th
DE ANNIVERSARY



AAVSB RACE approved for
270 CE Credits

Distance Education Clinical Neurology



270 CPD
POINTS

Neurological cases are often daunting and sometimes scary. Most of us don't have easy access to MRI, and our memories of 'upper motor neurons' and the names of some of the cranial nerves may be all that remain of those lectures that we all attended.

However, clinical neurology is actually one of the easiest subjects to master, provided we remember (i) a bit of basic anatomy, (ii) a few scraps of physiology and (iii) follow some basic rules.

This Clinical Neurology course will enable you to develop your skills and knowledge to deal with those tricky cases that are often referred to a specialist. It will take you from the basics of clinical neurology and an introduction to neuroanatomical localization, to developing a logical step-wise approach to the most common neurological presentations of companion animals. All this information will be delivered with the help of lots of videos, photos, diagrams and practical tips which you will be able to apply in your practice.

Whether you feel that you cannot do neurology because of the complexities of neuroanatomy and neurophysiology or because you don't have a MRI in your back room, this course is for you. We will show you how to succeed with each and every case!

Course dates

1 September, 2016 – 30 June, 2017
Study break: January 2017

Study mode

10 Modules | Delivered online
Monthly webinars

Tutors

Laurent Garosi
DVM, Diplomate ECVN, MRCVS

Simon Platt
BVM&S, Diplomate ACVIM
(Neurology), Diplomate ECVN,
MRCVS

About the course

Learning outcomes

Our ultimate aim is to develop your ability and confidence to work-up neurological cases. We will focus on developing a logical approach to presentations such as:

- ▶ **Develop a clear and logical approach to difficult and complex cases**
- ▶ **Paresis and paralysis**
- ▶ **Ataxia**
- ▶ **Seizures, tremors and other paroxysmal events**
- ▶ **Blindness**
- ▶ **Anisocoria**
- ▶ **Intermittent weakness and collapse**
- ▶ **Tight jaw, dropped jaw and droopy faces**

In addition, you will learn to diagnose and manage all of the common brain, spinal and neuromuscular diseases commonly seen in practice.

Modules

1. Introduction to clinical neurology

- Which elements of neuroanatomy and neurophysiology are relevant to clinical neurology?
- Performing a thorough neurological examination and how to make sense of its findings
- Identifying the neurological examination findings associated with lesions in the different regions of the peripheral and central nervous system
- Establishing a differential diagnostic list

2. Ataxia

- Recognising the different types of ataxia and their anatomical basis
- Formulating a differential diagnostic list and diagnostic plan depending on type of ataxia

3. Neuro-ophthalmology and common cranial nerve disorders

- Sorting out anisocoria
- Developing a logical and step-wise approach to blindness
- Tackling common presentations such as dropped jaw, trismus, facial paralysis and masticatory muscle atrophy

4. Intracranial diseases

- Differentiating the signs relating to different regions of the brain
- Diagnosing and managing common intracranial diseases

5. Epilepsy, tremors and paroxysmal movement disorders

- Differentiating an epileptic seizure from other paroxysmal events
- Diagnostic approach and rational treatment of epilepsy
- Developing a logical approach to tremors

6. Exercise-associated weakness and collapse

- Step-wise approach to an animal with exercise-associated weakness and collapse
- Common neuromuscular conditions

7. Non-surgical spinal diseases

- Diagnosing and managing conditions such as fibrocartilaginous embolism, degenerative myelopathy, discospondylitis or myelitis

8. Surgical spinal diseases

- Diagnosing, and understanding the surgical treatment of atlanto-axial instability, cervical spondylomyelopathy, disc herniation or spinal fracture/luxation

9. Neurological causes of lameness and monoparesis

- Differentiating orthopaedic from neurological causes of lameness
- Common neurological causes of monoparesis

Payment plans

Payment plans are available. For more information or to arrange your payment plan please contact the CVE Team on +61 2 9351 7979

Race approved

This program was reviewed and approved by the AAVSB RACE program for 270 hours of continuing education. Participants should be aware that some boards have limitations on the number of hours accepted in certain categories and/or restrictions on certain methods of delivery of continuing education. Please contact the AAVSB RACE program if you have any comments/concerns regarding this program's validity or relevancy to the veterinary profession. This program was reviewed and approved by the AAVSB RACE program for hours of continuing education. Participants should be aware that some boards have limitations on the number of hours accepted in certain categories and/or restrictions on certain methods of delivery of continuing education. Please contact the AAVSB RACE program if you have any comments/concerns regarding this program's validity or relevancy to the veterinary profession.



Laurent Garosi

DVM, Diplomate ECVN, MRCVS

Laurent Garosi is a Diplomate of the European College of Veterinary Neurology (ECVN) and RCVS/ European Specialist in Veterinary

Neurology. He is currently company director and head of the neurology/neurosurgery service at Davies Veterinary Specialists, UK. In 2012, Laurent opened a dedicated feline neurology service, which is the first of its kind in Europe. His main clinical and research interests are cerebrovascular diseases, neuro-imaging and feline neurology. Laurent has published widely in the field of neurology and is a regular speaker on the national and international continuing education circuit. He is currently past president of the ECVN, past chief examiner of the ECVN examination committee and co-editor with Simon Platt of a recently published textbook on Small Animal Neurological Emergencies. He is a co-tutor in the CVE DE course on Clinical Neurology.



Simon Platt

BVM&S Diplomate, ACVIM (Neurology), Diplomate ECVN, MRCVS

Simon received his veterinary degree from the University of Edinburgh,

Scotland, in 1992. He trained at the University of Florida, worked as a neurologist at the Animal Health Trust in the UK and is currently a Professor at the Dept. of Small Animal Medicine and Surgery at the University of Georgia. Simon is the co-editor of the BSAVA Manual of Canine and Feline Neurology and the Manual of Small Animal Neurological Emergencies with Laurent Garosi. Simon is Past-President of the ACVIM Neurology Specialty and Founder member of the South Eastern Veterinary Neurology (SEVEN) group in the USA. He is a co-tutor in the CVE DE course on Clinical Neurology.

Register online

www.cve.edu.au/de/clinical-neurology
Alternatively, complete the registration form

Or, send us your registration by

Fax: +61 2 9351 7968

Post: Centre for Veterinary Education
Veterinary Science Conference Centre
Level 2, B22 Regimental Drive
The University of Sydney NSW 2006

Personal details

I am a CVE Member: Yes No

Category:.....

First Name:.....

Surname:.....

Practice Name:.....

Address:.....

Suburb:..... State:.....

Postcode:..... Tel:.....

Email:.....

Course fees

Super early bird – expires 31 January, 2016

<input type="checkbox"/> Member*	\$4,212
<input type="checkbox"/> Non-member / eMember	\$4,460

Early bird – expires 30 June, 2016

<input type="checkbox"/> Member*	\$4,462
<input type="checkbox"/> Non-member / eMember	\$4,710

Full course rate

<input type="checkbox"/> Member*	\$4,712
<input type="checkbox"/> Non-member / eMember	\$4,960

Member* includes: Practice, Professional, Part-time, Recent Graduate and Academic members.

Become a CVE Member

<input type="checkbox"/> Practice membership	\$660
<input type="checkbox"/> Professional member	\$370
<input type="checkbox"/> Part-time Professional member	\$185
<input type="checkbox"/> Recent Graduate member	\$185
<input type="checkbox"/> Academic member	FREE

For more information on membership benefits, visit:
www.cve.edu.au/membership

Payment

Cheque Please make cheque payable to the
Centre for Veterinary Education

Credit Card Visa / Mastercard

Amount authorised to charge: \$.....

Card No:.....

Name on Card:.....

Signature:..... Expiry Date:.....